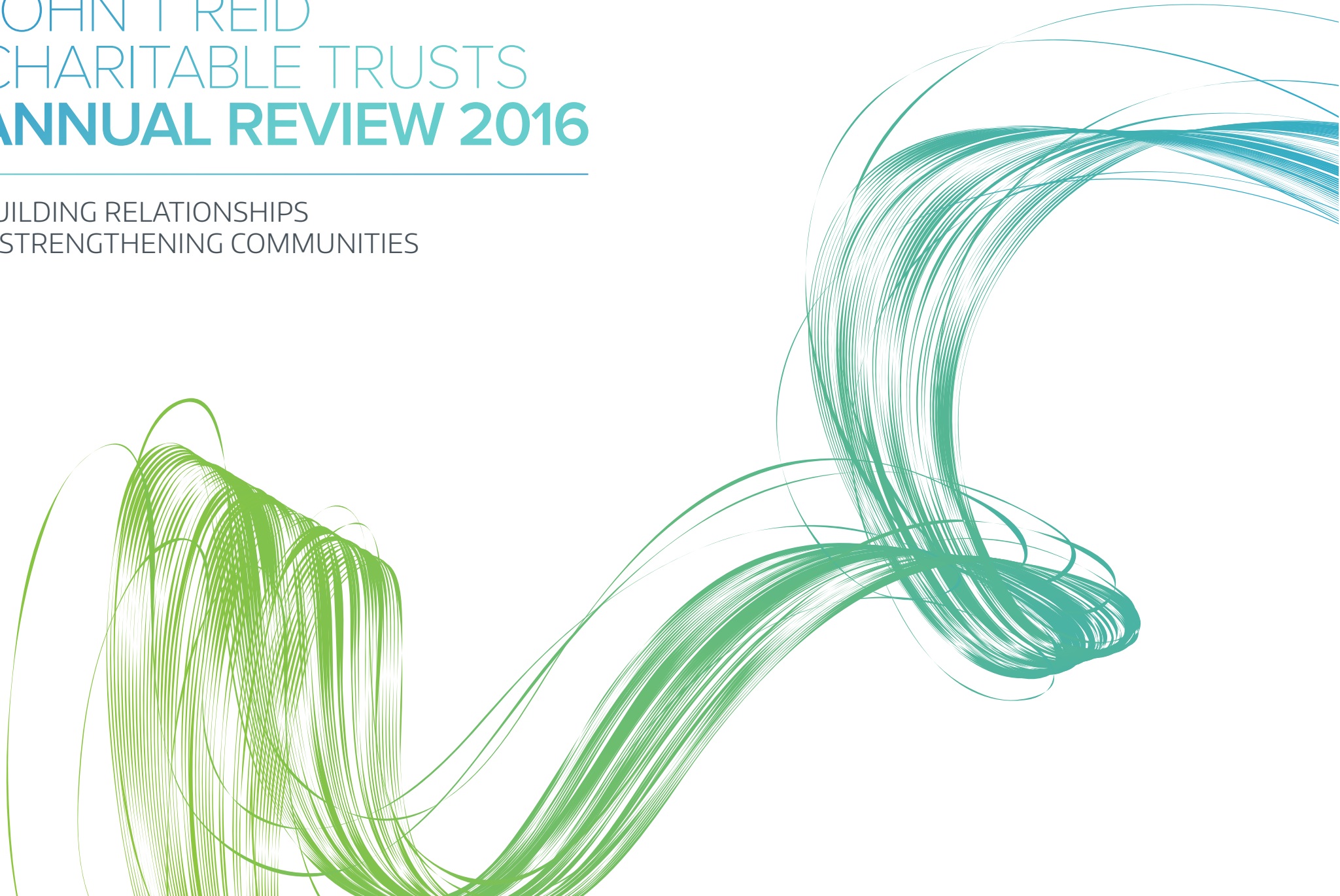


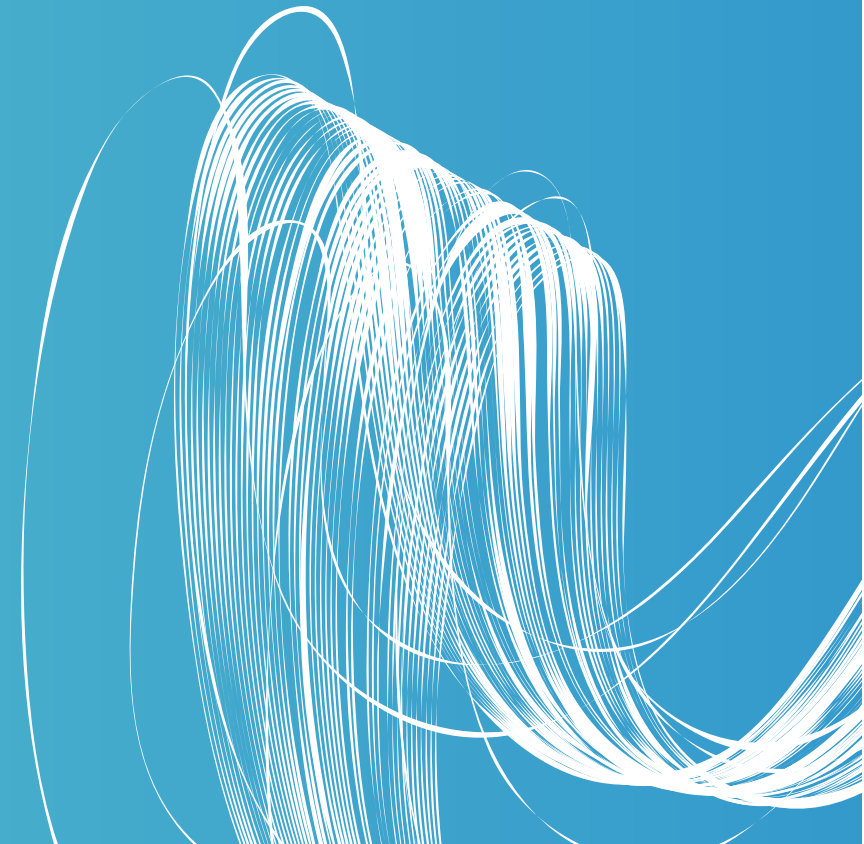
JOHN T REID
CHARITABLE TRUSTS
ANNUAL REVIEW 2016

BUILDING RELATIONSHIPS
& STRENGTHENING COMMUNITIES



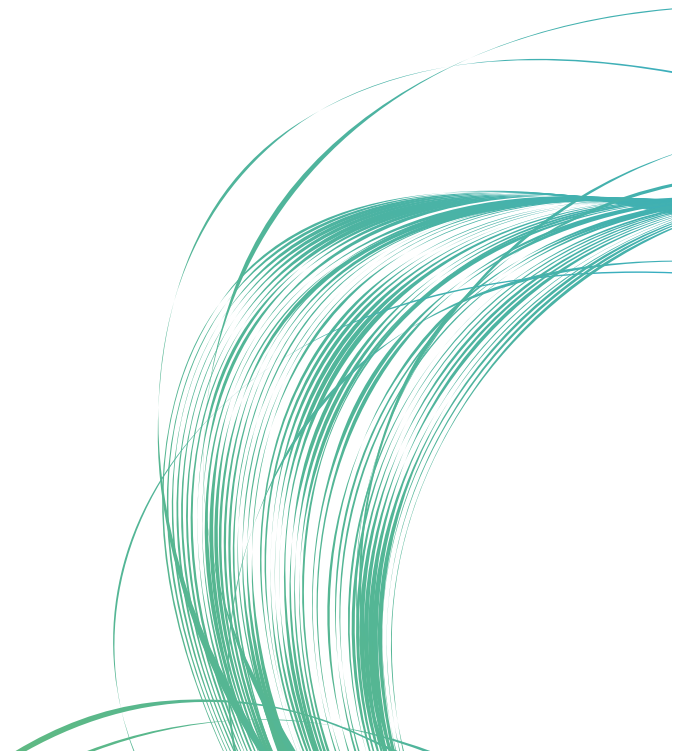
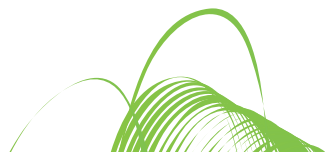
SIR JOHN THYNE REID 1903 – 1984

Kind, meticulous and methodical,
he was generous with his time,
his experience and his wealth.



CONTENTS:

About Us	4
Chairman's Report	6
Chief Executive Officer's Report	8
2016 Funding Overview	10
Funding Highlights	
Aged and Palliative Care	12
Arts and Cultural Heritage	14
Community and Social Welfare	16
Education and Youth Support	20
Environment	22
Health Support	24
Acknowledgements	26



ABOUT US

The John T Reid Charitable Trusts comprises two Trusts, a Victorian Trust and an Australian Trust, that are administered together. The Trusts are covered by Deeds that provide guidance to the current Trustees on the provision of financial support to eligible charitable organisations within Australia. The founder, Sir John Reid, was very private and respectful in his philanthropy. The Trustees reflect this in their current giving, whilst acknowledging the requirements of the Australian Charities and Not-for-profits Commission and the ever-changing philanthropic sector.

Grants from the John T Reid Charitable Trusts are focused on supporting communities to build their capability, and Trustees are mindful of current needs in the community. Grants are allocated into six main categories:

- Aged and Palliative Care
- Arts and Cultural Heritage
- Community and Social Welfare
- Education and Youth
- Environment
- Health Support

Many of the grants provided by the John T Reid Charitable Trusts fall within more than one category of support, and funding applicants are encouraged to outline their areas of need rather than trying to fit within a specific category. The allocation into categories is made by the administrative staff when considering the main population that will benefit from the grant.

The John T Reid Charitable Trusts fund organisations of varying size, and many factors are considered by the Trustees when assessing a funding submission. Of the eight Trustees, four are direct descendants of Sir John, and four are independent Trustees with wide-ranging skillsets and experience within the not-for-profit sector and in business.

The Trustees and staff are proud of the work of the John T Reid Charitable Trusts and hope you enjoy reading the 2016 Annual Review.



THE TRUSTEES OF THE JOHN T REID CHARITABLE TRUSTS

L-R Dr Barbara Inglis, Ms Jane Reid, Mr Andrew McKenzie, Mrs Belinda Lawson (Chairman),
Mr Philip Endersbee, Ms Cath Webb, Mr Douglas Goodman, Mr Trevor Thomas

CHAIRMAN'S REPORT

I am very pleased to present this Annual Review of the John T Reid Charitable Trusts for 2016.



The two Trusts constituting the John T Reid Charitable Trusts were set up in 1955 and 1963. From the outset, Sir John established a process which relied on the Trustees' direct involvement in the identification and investigation of potential grant projects. The work of responsible giving was well understood by the early Trustees. As one of the first Trustees said, "the successful giving of money is no act of self-indulgence, but requires diligence and energy to work through the opportunities and finally to select those whom we would help".

I am happy to be able to say that this approach to responsible giving continues at the Trusts. It is true that our process has changed over the years, partly in response to governmental requirements for increased transparency in philanthropy, but also (and primarily) to address internally identified desires for strong governance principles and operational efficiencies to enable the Trusts to deal with the substantial growth in grant applications in a manner consistent with Sir John's intentions. The Trusts still rely on each Trustee (ably assisted by our small but committed staff) contributing their time, skill and energy to the grant-making process by thoroughly investigating the grant submissions and reporting their findings at our bi-annual grant meetings.

The Trusts have achieved a strong record of effective giving throughout Australia. The wisdom of Sir John in providing the Trusts with broad parameters for grant-making has allowed us to support a wide range of projects – many of them now iconic endeavours.

The Trustees and I regularly attend roundtable discussions, workshops and events, whether with grant recipients or other philanthropic trusts, discussing and evaluating where the greatest needs in the community lie. We believe that a primary part of our role as Trustees of the John T Reid Charitable Trusts is to remain active and to engage in the philanthropic community. Through our activities during the year, we have found that recent issues in the community have particularly been around climate change, mental health, drug use (with a focus on methamphetamine (ice)), as well as a need for support for carers of the sick and elderly.

Over the past year, many deserving projects have been supported by the Trusts, balancing funding between rural, regional and urban projects, including the following:

- Climate change;
- Sustainable agriculture;
- Supporting patients and carers;
- Mental health and eating disorders;
- Alcohol and drug awareness and support;
- Providing young people with skills and confidence to either break the cycle of disadvantage, or provide leadership opportunity for success and growth;
- Education to young individuals that may miss out due to remote location or disadvantage; and
- Ensuring useful resources are digitised and available in electronic formats.

This report also highlights several other significant projects funded in our six different categories.

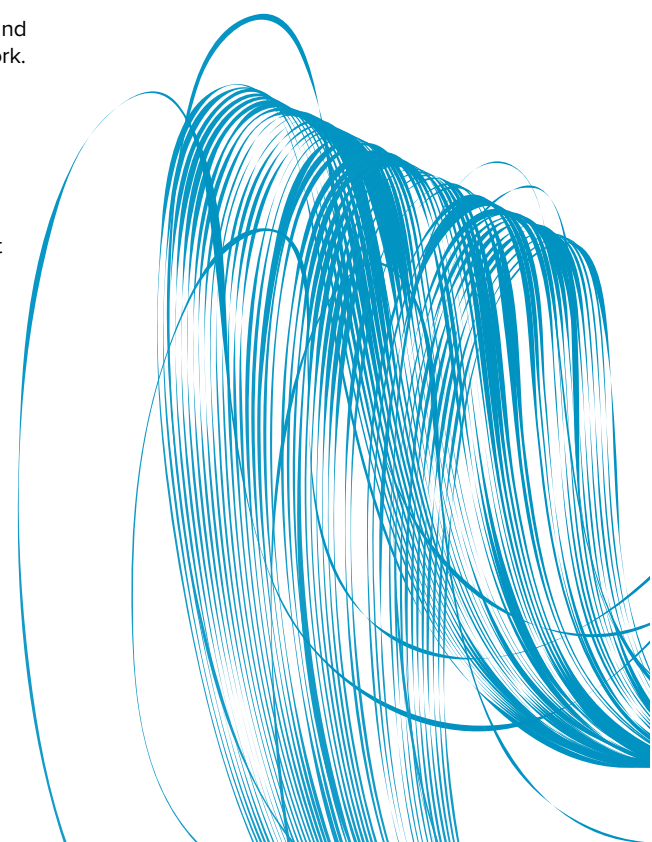
I would again like to thank all of the Trustees for their work over the past year. The demands on each Trustee of the John T Reid Charitable Trusts increases with each passing year, and I appreciate the enthusiasm and commitment the Trustees continue to bring to our work.

The work of the Trusts is only possible through the skill and effort of our dedicated staff: Debbie Ashbolt (Chief Executive Officer), and supported by Jessica Hurle, Megan Lawson and Melanie Robertson.

I would also like to thank our financial consultants, Dominic Pelligana at KPMG for his consistent support and wisdom, and Sue Dahn at Pitcher Partners.



Belinda Lawson
Chairman



CHIEF EXECUTIVE OFFICER'S REPORT

We have had a wonderful year at the John T Reid Charitable Trusts as the staff and Trustees continue to monitor philanthropic need in the community, and ensure our giving is relevant and appropriate. I am pleased to provide this update on various areas of the work we do.



Administration

We have had much activity amongst the staff over the past year. Our Office and Communications Manager Jessica Hurlle returned from maternity leave in August 2015, and our Administration Officer Melanie Robertson started her maternity leave in December 2015. We congratulate Melanie and her husband Ashley on the birth of Jasmine in February 2016, and look forward to welcoming Melanie back to the office towards the end of the year. Megan Lawson, who has worked on our database in the past, has done a great job covering Melanie's maternity leave position.

I would like to thank all the staff for their flexibility over this period, and for the thoughtful way in which they manage the important work we do at the Trusts.

Funding Model

The Trustees and I are continually assessing our funding model to ensure we are providing good support and feedback to our funding applicants. We feel confident that our two-stage application process enables applicants to receive a quick response as to whether the Trustees are able to consider a full submission from their organisation. The thorough research done by the Trustees on full submissions, including meeting with applicants, ensures they are making an informed decision when they meet to consider the funding requests twice a year.

Philanthropic Sector

It was very pleasing to have confirmation in March 2016 that the future of the Australian Charities and Not-for-profits Commission (ACNC) is assured. We find the ACNC website a useful resource in assessing funding enquiries, and their regular newsletters keep us informed of the latest regulatory news.

We were pleased to re-join Philanthropy Australia in June 2016, and enjoyed the opportunity to attend their conference in September. I have also enjoyed meeting up with colleagues at the regular CEO Forums and through our membership of the Australian Environmental Grantmakers Network.

Governance

With guidance from the Trustees, I have updated our Risk Policy, Privacy Policy and Staffing Policy over the past year. We have also altered the mode of our grant payments, changing to electronic funds transfer rather than paying by cheque. We are pleased that this is providing us with more transparency and immediate confirmation that the payment has been made successfully. Our Grant Deed has been amended to reflect this change.

Financial

The Trustees appoint a Finance Committee to oversee the financial management of the John T Reid Charitable Trusts' assets. The Committee is made up of the Chairman and three other Trustees. I attend the meetings, in addition to our Investment Advisor and the Company Secretary. Prudent monitoring of the asset mix has meant the financial status of the John T Reid Charitable Trusts has remained well-managed over a very volatile period in the financial markets.

I would like to thank our Chairman Belinda Lawson and the Trustees for all their support this year, and I look forward to working with them in 2017.

Debbie Ashbolt

Debbie Ashbolt
Chief Executive Officer

2016 FUNDING OVERVIEW

2016 Review

The 2016 Annual Report provides information on the activities of the John T Reid Charitable Trusts in the financial year to 30 June 2016.

The report also highlights several significant projects in each funding sector.

Grants Approved

The Trustees approved funding to the following organisations at their meetings in November 2015 and May 2016, totalling just over \$2.5 million.

Aged and Palliative Care

Alzheimer's Australia
Lord Somers Camp and Power House
Peninsula Home Hospice
The Old Colonists Association of Australia
University of Queensland, Queensland
Brain Institute

Arts and Cultural Heritage

3MBS
Bangarra Dance Theatre
Leongatha Lyric Theatre
Queensland Theatre Company
State Library of Queensland

Community and Social Welfare

Alcohol and Drug Foundation
Asylum Seeker Resource Centre
Australian Red Cross
CareFlight Rescue
Fighting Chance
Karinya Young Women's Service
Metro Assist
Ngaimpe Aboriginal Corporation
Sacred Heart Mission
SMART Recovery
St Vincent de Paul Society NSW
The Holland Foundation
The Social Outfit
UnitingCare Lentara
UnitingCare Regen
Wesley Mission
YWCA NSW

Education and Youth

Ardoch Youth Foundation
Australian Academy of Technology and Engineering
Berry Street
Cora Barclay Centre
Cottage by the Sea
Discovery Science & Technology Centre, Bendigo
Documentary Australia Foundation, Embrace
Mallee Family Care
Teach for Australia
Youth Off The Streets

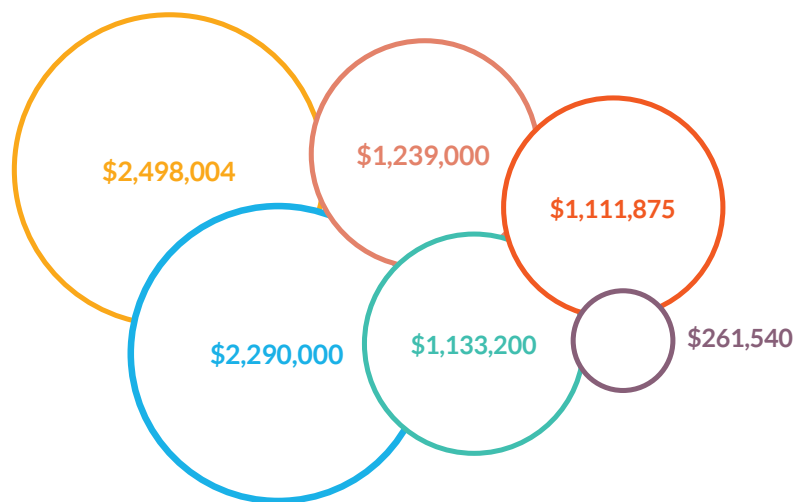
Environment

Desert Discovery
The Climate Council

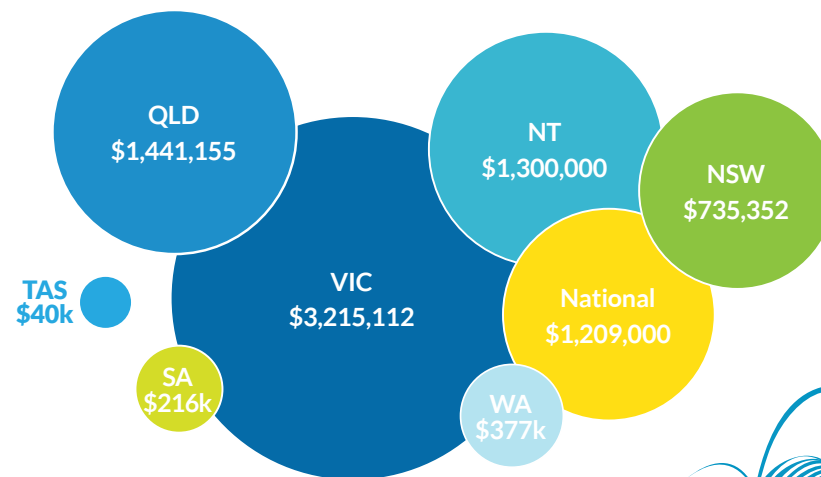
Health Support

Eating Disorders Foundation of Victoria
Fight Cancer Foundation
One Disease
Stroke Association of Victoria

ACTIVE GRANTS YEAR TO 30 JUNE 2016 BY CATEGORY SPREAD:



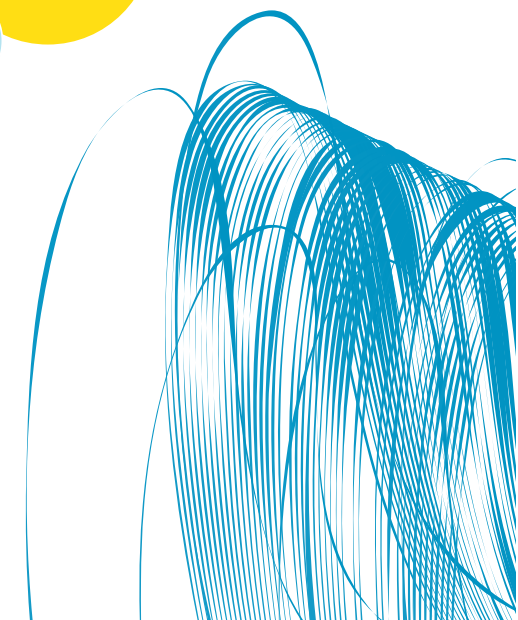
ACTIVE GRANTS YEAR TO 30 JUNE 2016 BY GEOGRAPHIC SPREAD:



Active Grants year to 30 June 2016

As part of our funding model, all grants that have unspent funds are considered active grants. Grants will only be considered inactive when the Trustees are satisfied that the final report adequately explains the acquittal of funds. Some of these grants will have been paid this year, and others will have been paid in previous years; some active grants are multi-year grants that are paid over two or three years.

Active grants in the 2016 financial year totalled \$8.5 million, and the graphs above show these grants in both category and geographic spread.



AGED AND PALLIATIVE CARE

The proportion of older people in the Australian population is increasing, and many health conditions such as arthritis and dementia become more common as people age. There is also increased demand for accommodation for the aged. The Trustees aim to address these areas of need by funding organisations that provide hands-on support in this sector.

Alzheimer's Australia Vic, MOBILE IMMERSIVE DEMENTIA EXPERIENCE PROJECT

Caring for someone with dementia can be challenging both physically and emotionally. It is extremely important for a carer to understand what the world looks and sounds like for the people in their care who live with dementia.

Through the Virtual Dementia Experience at Alzheimer's Australia Vic, participants are taken through two scenarios – one showing a domestic environment with features which are unfriendly to people with dementia, and the second showing how simple changes can make an environment friendly and enabling.

When Alzheimer's Australia Vic first approached The John T Reid Charitable Trusts, The Virtual Dementia Experience was only available for health professionals in Parkville. Approved for funding at our May 2016 Submission Meeting, this moderate grant will assist in expanding this highly effective dementia education workshop to incorporate family carers across Victoria, with testing to begin in November.



Peninsula Home Hospice, BUILDING THE FUTURE

Peninsula Home Hospice (PHH) provides home-based palliative care that optimises quality of life and honours the hope for comfort, choice, dignity and peace.

Early in 2015, PHH purchased a building in Mornington, Victoria, central to their service delivery area, with sufficient space for growth and adequate parking for staff and the community using the service.

A large grant recently approved by the John T Reid Charitable Trusts will assist in the refurbishment of the new building, with completion expected at the end of 2016 when the leases expire on the properties PHH currently work from.

The building has been meticulously designed to meet the highest standards of Disabled Access and OH & S requirements while creating an environment that is flexible, inviting and functional that will house the PHH team and allow them to provide specialist home-based palliative care to its community for many years to come.



ARTS AND CULTURAL HERITAGE

Access to and participation in the arts is an important part of all communities. Granting in this area is focused on supporting those who would be unable to access the arts without financial support. This may be in the form of theatre, dance, music, literature, or cultural history, and several recent grants have supported access for young people, particularly in regional areas.

Leongatha Lyric Theatre, THEATRE SEATING

In approving grants, The Trustees like to balance the funding between rural, regional and urban projects.

In January 2016, the John T Reid Charitable Trusts were delighted to provide a small but vital grant to Leongatha Lyric Theatre in Victoria, in support of their Stage 2 Theatre Seating Program.

The Leongatha Lyric Theatre has provided high quality performances for over fifty years. The Theatre Seating Program will deliver modern and comfortable theatre seating, required for equitable access for all of the community, particularly for the significant number of senior citizens and people with a disability.

“THE ASSISTANCE THE JOHN T REID CHARITABLE TRUSTS PROVIDED TO US HAS, AND WILL HAVE, AN ENDURING LEGACY FOR OUR AUDIENCES AND COMMUNITY THEATRE IN LEONGATHA.”

MICHAEL STREET,
PRODUCTION MANAGER, LEONGATHA LYRIC THEATRE

“THE PROJECT IS GOING VERY WELL, AND I AM ABSOLUTELY BOWLED OVER BY THE EFFICIENCY AND DETAIL IN THEIR REPORT.”

BARBARA INGLIS,
TRUSTEE, JOHN T REID CHARITABLE TRUSTS

Queensland Theatre Company, REGIONAL SCENE PROJECT

The Queensland Theatre Company's Regional Scene Project has been designed and implemented in direct response to requests from high school drama teachers.

Over ten weeks, drama students from different schools develop an interpretation of 10-15 minutes of scenes from a specially commissioned script.

A total of 35 schools are participating in The Scene Project in 2016; six in Redland Bay, 17 in Brisbane, six in Rockhampton and six in Bundaberg.

Funding over three years from the Trusts will support nine regional and/or under-resourced schools.

Running the project consecutively over three years will facilitate sustained improvements in drama teaching and access to the performing arts for regional students.



COMMUNITY AND SOCIAL WELFARE

Mental health continues to be a strong area of focus in our granting this year, as have programs supporting those affected by methamphetamine (ice). The Trustees continue to monitor community need through their own networks, in addition to the enquiries we receive at the office. It has been pleasing to see how widespread our support has been in regional areas this year.

beyondblue, DIGITISATION OF THE WAY BACK RESOURCES

The Way Back Resources by beyondblue are a suite of hard copy publications (brochures) aimed at people who have recently attempted suicide and their carers. The resources educate people about the help that is available, offer practical suggestions about how to regain a sense of control and a connection with the community, and answer some questions that may arise after a suicide attempt.

Partly through funds from the Trusts in 2015, beyondblue created digital versions of these vital brochures; 'Finding your way back', 'Guiding their way back', and 'Finding our way back'.

These new webpages present the information in a digestible and user-friendly manner, especially for those browsing the content on their mobile phone.





St Vincent de Paul Society Queensland, VOLUNTEER REFUGEE TUTORING & COMMUNITY SUPPORT

The Volunteer Refugee Tutoring and Community Support (VoRTCS) program is a volunteer-run initiative that provides free in-home tutoring and support for refugee families in Brisbane.

The support of the John T Reid Charitable Trusts has enabled the Society to expand the reach of a successful model into four other areas of existing and emerging need throughout Queensland: Logan, Ipswich, Townsville and Toowoomba.

160 families and 450 volunteers (including roughly 40 volunteers in new regions) have benefited from this program in 2015. Over the past year, VoRTCS has been extremely proud of the 59 families who graduated from the program after reaching English Language competency and assimilated into their local communities. It's because of the volunteers who visited these families each week for 2-5 years that they are now finally navigating Australian life with confidence and eagerly contributing back to their community.

By July 2017 VoRTCS will offer valuable support to some of the 3,500 Syrian refugees that are settling possibly in Brisbane, Toowoomba and Townsville.

“IT IS FABULOUS THAT WE HAVE THE JOHN T REID CHARITABLE TRUSTS GRANT TO ASSIST US WITH GETTING THE CAMPUS STUDENT-READY.”

LYNETTE MOORE,
PHILANTHROPIC GRANTS MANAGER, BERRY STREET

Berry Street, BETTER EDUCATION OPTIONS FOR DISADVANTAGED YOUNG PEOPLE IN BALLARAT

Berry Street found that disadvantaged young people in the Greater Ballarat region were not having their education needs adequately met by existing education and welfare systems. Their new campus will deliver trauma-informed, individualised education programs for disadvantaged people aged 12-to-18 years in the area.

The campus will also offer specialised academic programs including VCAL, creating pathways for students to further education, training and/or employment.

The Trustees were pleased to hear recently of Berry Street securing a site for the campus, previously a small independent school, with the plan of opening the campus in January/February 2017.



One Voice, MOBILE SHOWER FACILITY

One Voice seek and assist homeless youth living on the streets who are in need of basic help and support; providing practical human services, hope and opportunity for a better standard of life and future.

One of the challenges when living on the streets is personal hygiene. Responding to this need in 2014, One Voice launched Australia's first 'Mobile Shower Service' in Melbourne, with the support of the Trusts among others. This is creating positive change to help restore dignity in people's lives, one hot shower at a time.

The Trusts have continued funding One Voice for a second fully self-contained mobile shower bus with on-board water and drainage tanks to eliminate the need to connect to external services.

Ngaimpe Aboriginal Corporation, THE GLEN CENTRE

Ngaimpe Aboriginal Corporation operates The Glen in New South Wales. It is the only Indigenous drug and alcohol rehabilitation program servicing the Central Coast, Newcastle, The Hunter Valley and the Greater Sydney area. The Glen targets Aboriginal men suffering from addiction and offers a long-term residential program based on the twelve-step programs of Alcoholics Anonymous and Narcotics Anonymous. As well as offering group and one-to-one counselling, The Glen also encourages its clients to participate in community activities and work programs.

John T Reid Charitable Trusts has contributed funding to a third building in Chittaway Bay, to expand the accommodation and allow 5 extra beds to be added. The Glen is hoping to invite new clients into the finished buildings at the end of 2016.



Foundation for Rural & Regional Renewal, REPAIR RESTORE RENEW PROGRAM

In the spring and summer of 2013, communities in many parts of south-eastern Australia experienced a number of natural disasters including bushfires in several states, and cyclones with associated flooding.

The Foundation for Rural and Regional Renewal (FRRR), Repair Restore Renew (RRR 2013) program provides support for community-led recovery initiatives in the 2013 disaster regions in Tasmania, Victoria, New South Wales and Queensland.

In total, the John T Reid Charitable Trusts has funded, fully or in part, nine medium to long term projects in the RRR 2013 program, including the Dunalley Community Garden at the Dunalley Tasman Neighbourhood House Inc., as pictured above, which was damaged by the January 2013 bushfire, with a considered restoration recently completed.

The community garden project re-engaged community volunteers such as the Dunalley Gardening Club, in the ongoing maintenance and upkeep making the garden both a source of pride and educational value to the community.

“THANKS TO YOUR GENEROUS FUNDING, ADF HAVE BEEN ABLE TO BEGIN WORK IN WESTERN AUSTRALIA AHEAD OF THE FEDERAL PROGRAM ROLL-OUT, WITH PARTICULAR FOCUS ON TARGET COMMUNITIES OF GERALDTON, ESPERANCE AND ALBANY.”

GREG WILLIAMS,
WESTERN AUSTRALIA STATE MANAGER, ADF

Alcohol and Drug Foundation, TACKLING THE ISSUE

The Alcohol and Drug Foundation (ADF) is one of Australia's primary organisations that work with communities to prevent drug and alcohol abuse and harm.

The ADF has a reach over 2 million Australians through their Good Sports program, which concentrates on alcohol management and positive health promotion in community sport. This program has been proven to have a positive impact on the community.

The John T Reid Charitable Trusts has contributed funding towards the new Tackling the Issue project, which focuses on increasing the capacity of sports clubs to address drug-related problems in three priority regions of Western Australia.

Combining the Trusts' grant with recently approved funding from the Department of Health, ADF hope to commence the Tackling the Issue project later this year, ensuring a greater outcome than originally expected.

EDUCATION AND YOUTH

Projects supported by the John T Reid Charitable Trusts often focus on providing young people with the skills to build their confidence and independence so they can break the cycle of disadvantage that is sadly experienced so widely in our community. We have seen some good outcomes from multi-year grant recipients in this sector.

Reading out of Poverty,

READ LEARN PLAY

Reading out of Poverty is a volunteer-based organisation working with the local community to improve the early-literacy skills of disadvantaged children from birth to five years.

Through developing a love for and a habit of reading from a young age, children will become confident learners, remain in education, and achieve higher educational outcomes and better employment opportunities.

Through the successful introduction of the Read, Learn, Play program in the Dandenong/Doveton area of Melbourne, up to 300 children weekly are exposed to books and reading aloud opportunities. Through the program, parents also are encouraged to carry out home reading and pre-literacy learning activities.



“THANK YOU FOR THE JOHN T REID CHARITABLE TRUSTS SUPPORT, THESE BEDS ARE AN ESSENTIAL COMPONENT OF HUMMINGBIRD HOUSE’S MEDICALLY SUPPORTED HOME-LIKE ENVIRONMENT.”

FIONA HAWTHORNE,
GENERAL MANAGER, HUMMINGBIRD HOUSE

Hummingbird House, CHILDREN’S CLINICAL BEDS

Hummingbird House is Queensland’s only children’s hospice that provides end-of-life care to life-limited children and their families. As well as being medically supported, Hummingbird House is a home-like environment and makes the journey as comfortable as possible for the children and their families during their stay.

The John T Reid Charitable Trusts contributed funding for two of the eight clinical beds at the house. These beds are installed and are in regular use by children and their families. Hummingbird House looks forward to sharing more news with us in the coming year.



ENVIRONMENT

Environmental funding has continued to build on our prior years' granting to ensure the public are informed on the most pressing issues facing our natural environment. Collaboration between organisations to ensure there is no duplication is vital, and the Trustees work hard to ensure grants are provided to those who are experts in specific areas of environmental work.

The Nature Conservancy, GREAT SOUTHERN SEASCAPES

First highlighted in our 2014 Annual Review when the project had just been funded, the Trustees have been delighted to watch the Great Southern Seascapes project progress.

Once a live feed into Port Philip Bay is established, The Nature Conservancy expect 20,000 to 30,000 views from a global audience each month, which will assist in raising awareness about the beauty of southern seascapes and, ultimately, better conservation and management.



“WE WOULD LIKE TO THANK THE TRUSTEES OF THE JOHN T REID CHARITABLE TRUSTS FOR BELIEVING IN THIS VISION AND PROVIDING THEIR SUPPORT TO ESTABLISH THE CLIMATE MEDIA CENTRE.”

AMANDA MCKENZIE,
CEO, CLIMATE COUNCIL

Climate Council, CLIMATE MEDIA CENTRE

Launched in September 2015, the Climate Media Centre is the Climate Council's new strategic communications initiative, highlighting the wide-ranging impacts of climate change and clean energy solutions in Australia.

Through the Media Centre, Climate Council aims to:

1. Expand the number of trusted voices on climate change
2. Increase the number of media stories on climate change impacts and solutions
3. Elevate the quality of relevant communications
4. Reach new audiences

Climate Council was recently pleased to report to the John T Reid Charitable Trusts that the Climate Media Centre:

- Has 70 trusted and capable spokespeople
- Has generated well over 2,000 media items
- Has written and distributed five communication guides
- Has consistently reached new audiences in the media by securing pieces on news.com.au and featuring on The Project and Sky News

HEALTH SUPPORT

The Trustees are proud to support several leading scientists in translational medical research, and we have received some encouraging reports this year. Supporting community education and knowledge within the health sector has been a focus, along with supporting patients and carers, particularly relating to diseases that do not receive significant support from the community.

Cancer Council Victoria, CANSPEEC

CANSPEEC is a cancer-specific counselling service for Victorians, which provides telephone counselling delivered by a psychologist on referral from Cancer Council Victoria nurses.

Through their May 2016 report to the Trusts, Cancer Council advised that the CANSPEEC service has seen 120 referrals, with 93% going on to receive counselling support. These are patients and carers who otherwise may not have been able to access cancer-specific psychological support.

“I AM DELIGHTED THAT THE JOHN T REID CHARITABLE TRUSTS HAS GIVEN US THE OPPORTUNITY TO BEGIN THIS VITAL SERVICE HERE IN VICTORIA.”

TODD HARPER,
CHIEF EXECUTIVE OFFICER, CANCER COUNCIL VICTORIA

One Disease, HEALTHY SKIN PROJECT

One Disease recognises there is much to learn from one of the oldest surviving cultures in the world. The One Disease programs are developed in partnership with Indigenous communities, Elders, leaders and local medical providers, acknowledging their expertise as being essential to program success.

Funding from the John T Reid Charitable Trusts, and other donors will be matched by a private philanthropic fund, giving One Disease the opportunity of pooling a large sum of money in order to specifically support their Healthy Skin Project. The Healthy Skin Project aims to eliminate Crusted Scabies from Australia by the end of 2022.

The project will provide the expansion of One Disease's Crusted Scabies work into the Katherine region, led by a 'Healthy Skin Mob' nurse, focusing on:

- Developing partnerships with local clinics and the hospital;
- Assist with the identification, treatment and monitoring of patients;
- Educate and support patients and their families;
- Empower patients towards long-term disease self-management;
- Monitor and evaluate patient and program progress, and
- Educate and up-skill local health workers.



ACKNOWLEDGEMENTS

Thank you to all of the organisations that provided photos relevant to the projects we have assisted in funding.

Printed on 100% recycled paper.

A web version is available at www.johntreidtrusts.com.au.

CONTACT US

PO Box 438
CANTERBURY VIC 3126

Phone: 03 9830 4155

Email: info@johnreidtrusts.com.au

Web: www.johnreidtrusts.com.au

ABNs: 51 836 782 003 AUSTRALIAN TRUST
94 715 755 241 VICTORIAN TRUST

