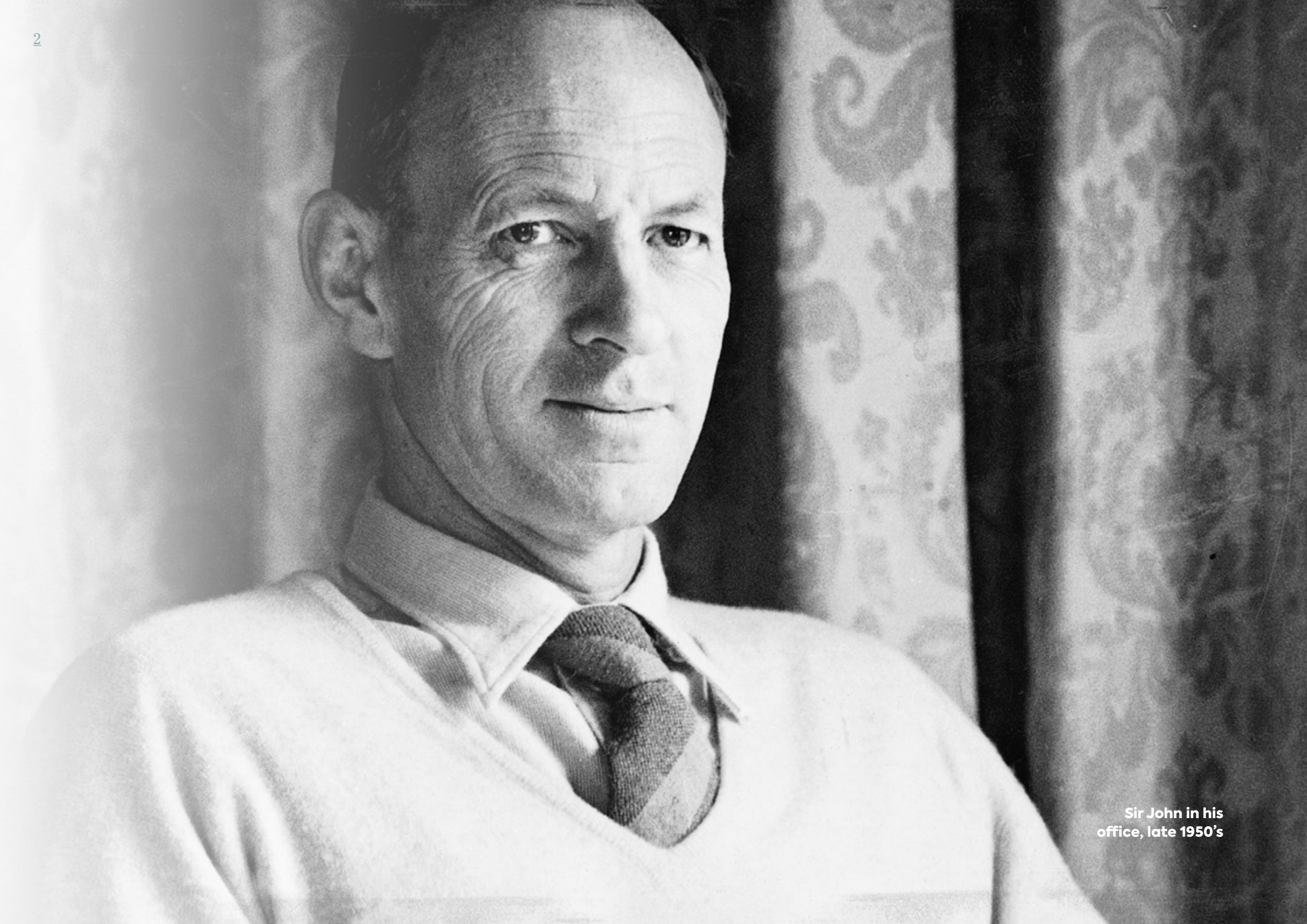


A photograph of three people, likely volunteers, walking along a dirt path. They are wearing high-visibility orange and yellow vests. The person on the left is wearing a white bucket hat and sunglasses. The person in the middle is wearing a brown hat. The person on the right is wearing a red cap. They are walking towards the camera. To their right is a barbed wire fence. In the background, there are trees and a clear sky. The text 'John T Reid Charitable Trusts' is overlaid on the right side of the image, with 'Annual Review 2020' below it.

John T Reid Charitable Trusts

Annual Review 2020



Sir John in his
office, late 1950's

Contents

About Us	4
Overview	6
Response to the 2019/2020 Bushfires	8
Response to COVID-19	10
Chairman's Report	12
Executive Officer's Report	14
2020 Funding Overview	16
60th Anniversary Grants Update	18
Aged and Palliative Care	20
Arts and Cultural Heritage	22
Community and Social Welfare	26
Education and Youth	28
Environment	30
Health Support	32
Acknowledgements	35

About Us

The John T Reid Charitable Trusts, created by the late Sir John Reid (1903 – 1984), is a family foundation that directs funds towards charitable purposes within Australia. For more than 60 years, four generations of family members have proudly supported worthy organisations across the nation.

Sir John Reid's philanthropy was based on his belief that well targeted grants allowed good people to get on with good work for the benefit of the community. This spirit of giving, combined with his wider networks, enquiring mind and support for humanitarian and social justice causes, ensured that from the outset a funding from the Trusts went to a broad range of organisations that were well placed to have a positive impact in their communities.

The Trust Deeds, typical of the founder, are straightforward and open. Registered charities and other institutions with 'deductible gift recipient' (DGR) status can be supported in a number of broad categories: aged and palliative care, arts and cultural heritage, community and social welfare, education and youth, environment and health support. In recent years a specific environment category has been included to address the ever-growing challenges of sustainability and climate change.

Sir John provided granting guidance for trustees to provide philanthropic support:

- with relatively large amounts to a small number of charities, rather than small amounts to many;
- to charities unable to secure government support;
- to specific projects rather than general purpose funds; and
- to provide special consideration to those charities, which trustees think valuable to the community, but which lack popular appeal and support.

The John T Reid Charitable Trusts comprise two Trusts that are administered together. Established in 1955, the first Trust provides funding to eligible organisations in Victoria; the second Trust, which dates from 1963, is directed to eligible organisations in all other Australian states and territories. No funds from either Trust may be distributed overseas.

Each Trust is governed by a number of individual Trustees. There are ten Trustees across the two Trusts who manage the assets and distribute the income in response to the changing needs of the Australian community. The Trustees bring a broad range of professional skills and experience to the task. They include representatives from urban and regional Australia, and from different states and territories. Five of the current Trustees are descendants of Sir John.

The Trustees meet formally twice a year to assess funding submissions and make appropriate distributions. They also attend regular meetings to monitor investments and the progress of projects throughout the year and are supported in their work by three part time staff.

The Trustees and staff hope you enjoy reading the 2020 Annual Review of the John T Reid Charitable Trusts.



The Trustees of the John T Reid Charitable Trusts

L-R Standing: Mr Rob Anderson, Mr Doug Goodman,
Dr Barbara Inglis, Mr Phil Endersbee, Mr Trevor Thomas
L-R Seated: Ms Jane Reid, Mrs Belinda Lawson (Chairman),
Ms Cath Webb, Mr Andrew McKenzie (Deputy Chairman)

New Trustee

In the November 2019 Meeting the Trustees welcomed
Mr William Lawson to the Board of the Victorian Trust.

Overview

Over the last 12 months our community, country and world have changed in ways not seen in our lifetime.

At the end of 2019 Australia was affected by severe bushfires across four states with 46,050,750 acres burnt, over 3,500 homes destroyed and 34 lives lost along with significant impact on wildlife and their habitat. The bushfires were active from September 2019 to March 2020 and the destruction left behind devastated local communities.

In January 2020 we watched the news of the emergence of the Corona Virus in Wuhan, China. As an island nation we wondered how this might affect us and in March 2020 the first cases were recorded in Australia. By mid-March the Commonwealth Government, in conjunction with State and Territory Governments, announced measures to minimise the spread of the virus that had an immediate and widespread impact on businesses and workforces across almost every industry. Schools moved to online learning and workplaces required staff to work from home. We were all asked to play our part as individuals by following restrictions for the greater good of the community. As Governments moved to address the medical, economic and humanitarian impacts of the virus, our way of life changed overnight.

In the midst of lockdown the office continued to operate with staff working remotely. There was a granting round in February with online enquiries, enquiry meetings, submission meetings and trustee meetings held in May. Trustees around the country were linked via video conferencing facilities and funding submissions were given due consideration.

Our Trustees have continued to play an active role engaging in their areas of expertise and interest in the philanthropic sector, bringing their experience to the Trusts in undertaking their roles as Trustees. They have attended and taken part in webinars and roundtable discussions addressing bushfire recovery, mental health and issues impacting on the philanthropic landscape in Australia.

The Trusts have continued to support a wide range of organisations and have funded 29 new programs in the last 12 months totalling \$3,247,040. The Trust Deed from our Founder Sir John Reid has continued to meet the ever changing needs of philanthropy in the Australian community and the Trustees are proud to be able to continue this work.

BELOW: Jack speaking at a Conference for the Save our Sons Duchenne Foundation in his standing wheelchair funded by the Trusts.





FAR LEFT: Fire damage at La Mama Theatre. The Trusts have contributed to the rebuild.



LEFT ABOVE: Volunteers taking part in the Operation Crayweed program for the Sydney Institute of Marine Science.



LEFT BELOW: Junior Landcare Program Manager Mary Bell with students.



LEFT: Student performing in the State Theatre Company of South Australia's Summer School.

ABOVE: Kate Murphy, John T Reid Charitable Trust Outreach Programs Coordinator speaking to gallery visitors at the National Gallery of Australia.



BELOW: Libbi Clarke (Very Special Kids) 2019 Award Recipient of the John T Reid Community Service Award with representatives from the John T Reid Charitable Trusts and the Rotary Club of Melbourne.

Response to the 2019/2020 Bushfires

The John T Reid Charitable Trusts have always sought to provide grants for organisations that undertake work across a diverse range of projects and provide support at various stages of intervention. These include grants to address immediate need in communities, grants that provide funding for organisations addressing issues with a preventative focus and, supporting organisations taking on an advocacy role.

This approach was evident in the Trust's response to the 2019/20 bushfire crisis by providing a grant to BlazeAid, a volunteer-based organisation that works across Australia in rural areas after natural disasters. Volunteers rebuild fences and other structures that have been damaged or destroyed to return farming land to a productive state.

The Trusts have over a number of years provided grants to organisations such as the Australian Wildlife Conservancy that have undertaken projects using traditional fire management practices in areas such as the Kimberley. Planned burns in designated areas reduce fuel load and create a corridor for wildlife allowing a safe exit path should surrounding area

be affected by wildfires. This work was undertaken by a team of Rangers using these fire management practices in consultation with indigenous people. These strategies are used to manage the spread and impact of future wildfires in the area.

In 2019 the Trusts funded the Climate Council's Emergency Leader's for Climate Action (ELCA) to plan and execute a national advocacy strategy aimed at providing a meaningful and informed voice in the National Climate Change debate. The Council consisted of 23 former Fire and Emergency Chiefs from around Australia. The 2019/20 National Bushfires were a pivotal moment for the Climate Council - who took on a leadership role in contributing their expertise to educate the public on the link between climate change and its impact on extreme weather events and, to contribute to the policy debate. Although impacted by COVID-19, the council have run a series of public forums in 2020 and have established a program to continue this work.

The Trustees are pleased to be able to respond to these significant events and issues by using a balanced strategy that supports interventions at

various stages. These grants provide targeted funding support to engage with people who are well placed to make a meaningful contribution to both the current situation and future outcomes.

BlazeAid volunteers repairing fencing.
Image credit: Monique Satchell



Response to COVID-19

In March 2020 the Chairman and Executive Officer wrote to all organisations with whom we have active grants to understand how COVID-19 was affecting the delivery of their services and programs. Many of these organisations who work directly with vulnerable people were required to cease service delivery immediately with a large percentage of their staff stood down or re-deployed. Organisations made the decision to try and modify their services and programs to survive for the duration of the lockdown, not knowing how long it would last. Many projects were put on hold, some were re-scheduled, whilst others sought to modify their existing programs in an attempt to, in part, meet the needs of the communities they support.

As government and communities found themselves in uncharted territory the immediate needs of the community were addressed, mostly through Government financial assistance packages. There was however a significant need in certain areas to provide the basics of shelter and food for people, together with health support, as many agencies recorded a significant increase in demand for their services. Organisations such as North Shoalhaven Meals on Wheels Limited recorded a significant increase in demand for their services. Their delivery model was changed from daily to weekly to protect a vulnerable demographic aged over 70 years of age.

Victoria went into its second lockdown on 8 July 2020 and residents of a number of public housing towers in inner city Melbourne were forced to go into hard lockdown meaning residents were not allowed out of their apartments. Nine towers across North Melbourne and Flemington had recorded significant virus cases and the State Government sought to reduce the rate of transmission by instigating this control mechanism. Government Departments, welfare agencies and support services responded immediately to provide essentials items to residents. During this time the Trustees considered how the Trusts could make a contribution to address this immediate need. Already disrupted food supply channels were further challenged and in July the Trust provided a grant to Foodbank Victoria for the purchase of staple items for distribution to people experiencing food insecurity across Victoria.

The Trusts office remained open during the lockdown with staff working remotely, and staff and Trustees continuing to engage with organisations across the philanthropic sector. Given the evolving nature of the pandemic and the Government financial assistance packages being provided, the Trustees took a considered approach to their funding priorities. Understanding the altered operating conditions and supporting organisations with an existing funding arrangement was a first priority, and also assisting those who needed to pivot their service offering

by re-directing grant funding. One such area was organisations with whom the Trusts have provided funding for mental health programs. The impact of the pandemic on work, income, family relationship and substance abuse became apparent early on. Mental health is an area where urgent need is immediately apparent but where issues are left to compound can lead to more adverse health impacts. The Trusts have sought to ensure that these services continue to be resourced to meet the demand through ongoing support of many key mental health programs.

Although it is too soon to predict the impact of the global pandemic in Australia, the Trustees remain committed to funding worthy organisations working to support the most vulnerable members of our community. The message through the lockdown was “we are in this together” and the Trusts remain conscious of the need to continue to engage with the sector and provide assistance when and where it is needed.



Chairman's Report

The John T Reid Charitable Trusts are delighted to share with you a summary of our philanthropic giving over the 2019 - 2020 year.



Belinda Lawson
Chairman

Our process of granting to organisations through our bi-annual funding program has remained largely unchanged over the last 12 months however, in light of the 2019/2020 Bushfires and the global COVID-19 pandemic the Trusts have also provided support in response to these two events. Since April 2020 two significant grants have been made to organisations supporting communities in direct response to these two events.

BlazeAid is a volunteer-based organisation working in rural areas across Australia repairing fencing and other farming infrastructure to help farms return to a productive state after natural disasters. A grant provided by the Trusts enabled BlazeAid to purchase and equip combat vehicles and purchase swift shelters which provided accommodation for the volunteers.

During the pandemic, food security became a significant issue for people across the country for reasons including; state borders closures, immediate job losses and in many cases reduced access to normal channels of support. In light

of this the Trusts made a grant to Foodbank Victoria to purchase staple food items in a targeted effort to address food shortages.

Through the first half of 2020 the Trustees took part in online seminars and attended virtual meetings on a range of topics associated with the pandemic and the role of philanthropy. In March 2020 the Trusts contacted all organisations with whom we have an active funding relationship and those approved in the November 2019 funding round to seek advice as to how the pandemic was affecting their operations. Many organisations had to immediately suspend their operations, such as theatre companies travelling productions and those who work directly in schools. Some organisations modified the delivery mode of their programs to online delivery where possible, such as the Sydney Philharmonia Choirs delivering online workshops and a performance. Other organisations pivoted their services and combined with other similar organisations to address the need of their existing clients.

Another area of acute need was resourcing organisations providing mental health support. Since the pandemic began mental health organisations have recorded an unprecedented demand on their services along with organisations who support people with alcohol and gambling addiction issues. The Trusts have continued to engage directly with these organisations to discuss how the Trusts can support them in addressing this need.

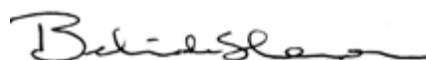
While much of the first six months of 2020 has focused on actively managing issues associated with these two significant events, the Trusts have continued with their core work funding organisations in communities across Australia.

We were pleased to welcome William Lawson as a Trustee at the November 2019 Trustee Meeting. William is part of the next generation of family members, great grandchildren of Sir John who take part in the granting process. A program established ten years ago by previous Chairman Annie Grindrod, whereby descendants are mentored by an existing Trustee to learn about the Trusts and our work. These great grandchildren take part in Submission Meetings with prospective grantees and Trustee Meetings where the Board formally considers applications. William has been involved in this program since its inception and he has brought many organisations to the Trusts to fund and provides input in his area of professional expertise, education along with an interest in youth and community welfare programs. We are pleased to welcome him to the Board of the Victorian Trust.

In closing I would like to thank my fellow Trustees for their continued dedication to their roles as Trustees, in particular in what has been a very different and difficult six months of 2020. Each Trustee brings their own skills, expertise and networks and as Chairman I am indebted to the experience and perspective they provide. I would also like to thank the office staff of Jessica, Melanie and Amanda who have not only adapted to working remotely but doing so whilst also home schooling their children.

The changed living and working conditions with additional stresses have affected us all in 2020 yet I look back and feel grateful that we have been able to continue our work.

It is with great pleasure that I commend the 2020 Annual Review to you.



Belinda Lawson
Chairman

Executive Officer's Report



Jessica Hurle
Executive Officer

After a year of settling into the new role of Executive Officer, and waving my youngest child off on her first day of school, I had many plans for 2020 which included dedicating more time to attending information sessions on the not-for-profit sector, and getting to know my peers in the philanthropic community.

It was a silver lining of the COVID-19 pandemic this year that gave me the opportunity to attend regular Zoom meetings from home, which have provided me with immeasurable knowledge on effective giving as well as urgent grant making. I am extremely grateful to our peak body, Philanthropy Australia as well as AEGN, for running regular catch up sessions. During long periods of lockdown in Melbourne, I was appreciative for the regular opportunity to attend meetings and see some familiar faces, and hear about how other donors are supporting not-for-profit organisations during such a difficult time.

The COVID-19 pandemic, and equally, the bushfires that devastated many parts of Australia in late 2019 and early 2020, have had an enormous effect on philanthropy.

In January 2020 the trustees unanimously agreed to provide immediate support to Blaze Aid, a hands on, grass roots organisation that assists with the rebuilding of fences after a bushfire has torn through an area. We were thrilled to provide a grant to this organisation, for four fully equipped trailers to support rebuilding in several areas throughout Victoria. I am pleased that our granting policy was flexible to be able to provide this out of round grant, and even during the time of our annual office closure.

It has been a delight to watch Amanda apply herself to the role of Administration Manager and see her gain such fulfilment from working in our sector. Amanda has gathered so much knowledge on philanthropy in such a short amount of time, and now manages our integral reporting process and continues to manage the data-input of our financial information, as well as writing this wonderful Annual Review.

In February, our Administration Officer Melanie's return meant we finally resumed to normal office arrangements with our usual three part-time staff, ensuring that the office runs smoothly in terms of both managing our existing grants, engaging with new organisations through our enquiry and submission process, and supporting Trustees in their role. During Melanie's absence in 2019 we were assisted by our casual Administration Officer, Abbey Johnson, and I thank Abbey for her work ethic and dedication to a temporary role.

Unfortunately though my pleasure at being back to fully staffed didn't exactly go to plan, and in mid 2020 we were all required to work from home for an extended period of time when strict social distancing measures were announced, to stop the spread of COVID-19.

The transition to this was relatively straightforward as we already had the technology required, with the support of our IT consultants Finrea. The staff all somehow managed to juggle their work at the Trusts, as well as assisting their children with remote learning. A huge thank you to Melanie and Amanda for your ongoing dedication to the success of the trusts even in such trying times, not to mention the education of your children!

During the pandemic, the John T Reid Charitable Trusts felt it was important to continue our usual support to not-for-profits, and persisted with our bi-annual submission process. We also provided several urgent grants in response to the pandemic, being to the Australian National Academy of Music (supporting the arts sector which has been heavily affected by social distancing measures), Foodbank Victoria (food security), and Orygen (youth mental health).

And finally, to finish on a positive note in what has been a turbulent year for everyone, we welcomed a new trustee this year in William Lawson. William brings a wealth of knowledge to the board as a secondary school teacher, and I am always grateful for his expertise in education, particularly when discussing new projects and programs to be delivered within schools and/or to children and young adults. William's appointment means we now have ten trustees located throughout Australia, all with an incredible amount of experience and knowledge in many different sectors. Thank you to our Chairman Belinda Lawson, and all of the trustees for providing your valuable time and expertise to our

bi-annual meetings, as well as our enquiry meetings when considering new online applications.

Our open online enquiry process continues to provide us with information on the needs in the community, and how best the Trusts can respond. We continue to be open for online enquiries twice a year, from mid-January to mid-February, and again from mid-June to mid-July.

As always, I am grateful to the support of Dominic Pelligana at KPMG, and Sue Dahn at Picher Partners, and their respective teams that provide assistance and advice to the trusts with finance matters and investments.

Please enjoy reading this 2020 Annual Review and I know I am certainly looking forward to 2021!



Jessica Hurle
Executive Officer

2020 Funding Overview

2020 Review

The 2020 Annual Review provides information on the activities of the John T Reid Charitable Trusts in the financial year to 30 June 2020 and highlights several significant projects in each funding sector.

Grants Approved

The Trustees approved funding of \$3,247,040 to the following organisations at their meetings in November 2019 and May 2020.

Arts and Cultural Heritage

Australian National University – School of History,
ANU College of Arts and Social Sciences
Dungala Kaiela Foundation
Geelong Gallery
Karrkad Kanjdji Trust
NorthSite Contemporary Arts
Queensland Ballet

Community and Social Welfare

Baby Give Back
Country Women's Association of New South Wales
Disaster Relief Australia
Jawun
Youth Live4Life Limited
Northern Community Legal Centre
Rape and Domestic Violence Services Australia
Sunraysia Community Health Services
The Royal Women's Hospital Foundation
The Wellington Collingwood

Education and Youth

Foyer Foundation
Port Phillip Specialist School
Stars Foundation
The Scout Association of Australia
– New South Wales Branch

Environment

Australian Academy of Science
BlazeAid
Climate Council
Documentary Australia Foundation
Northern Gulf Resource Management Group
Royal Botanic Gardens Victoria

Health Support

Earbus Foundation of Western Australia
Murdoch Children's Research Institute
Very Special Kids

Active grants year to 30 June 2020

The John T Reid Charitable Trusts have adopted a funding model in which all grants that have unspent funds are considered to be active grants. Grants are only considered final when the Trustees are satisfied that the final report provides evidence of the acquittal of the Trusts' funding.

The Trusts managed 100 active grants throughout the 2019/20 financial year, totalling \$11,975,682. The reach of these grants is represented here by both category and geographic spread.

Active grants year to 30 June 2020

Funding Category

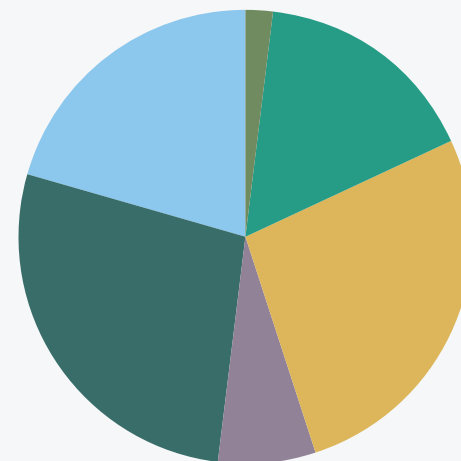
Aged and Palliative Care	\$245,000
Arts and Cultural Heritage	\$1,947,500
Community and Social Welfare	\$3,221,642
Education and Youth	\$834,840
Environment	\$3,295,250
Health Support	\$2,431,450
TOTAL	\$ 11,975,682

Active grants year to 30 June 2020

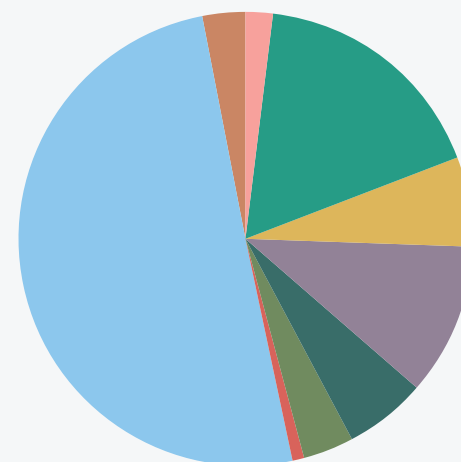
Geographic Location

Australian Capital Territory	\$250,000
National	\$2,050,000
New South Wales	\$781,090
Northern Territory	\$1,280,000
Queensland	\$705,600
South Australia	\$440,000
Tasmania	\$100,000
Victoria	\$6,005,392
Western Australia	\$363,600
TOTAL	\$ 11,975,682

Funding Category



Geographic Location



60th Anniversary Grants Update

In 2017 the Trusts celebrated 60 years of charitable giving by providing a number of anniversary grants to organisations as a way of acknowledging the founder and his philanthropic legacy.

In the fourth year of funding several of these projects are reaching their conclusion and the Trusts are pleased to provide the following updates.



Preventing harmful sexual behaviour and child sexual exploitation in out-of-home care

MacKillop Family Services works with some the most vulnerable and disadvantaged children and young people in communities across Victoria, South Australia, New South Wales and Western Australia. The organisation provides early intervention programs to support vulnerable families, out-of-home care services (residential and foster care), education, disability support and youth homelessness programs.

In 2017, the Trusts granted MacKillop Family Services an Anniversary Grant to pilot an innovative program that aimed to tackle an alarming increase in the sexual exploitation of children and young people living in residential care.

The three-year pilot, undertaken in partnership with the University of Melbourne, sought to co-design,

implement and evaluate strategies to prevent and intervene early in harmful sexual behaviour, child sexual exploitation and dating violence.

The result was 'Power to Kids: Respecting Sexual Safety' - a comprehensive program to give residential care workers the skills and confidence to have brave conversations with young people to build knowledge about sexual health and safety and to improve the capability of staff teams to respond quickly and appropriately to the risk of abuse.

The incidence of sexual exploitation of children in residential care is significant. Data from Victoria's Department of Health and Human Services (2017) indicates that almost one in three children in residential care have been identified as at risk, while the Royal Commission into Institutional Responses to Child Sexual Abuse (2017) revealed that 33% of child sexual abuse reports to child protection related to children and young people living in residential care, despite this cohort representing just 6% of all children and young people living in care in Australia.

A key feature of the pilot was developing a supportive relationship with local police to assist in minimising risks for young people.

MacKillop's long-term vision is to extend the program to foster carers and kinship carers and the children they care for. MacKillop Family Services has also received requests from organisations across Australia to implement the program in their out-of-home care programs.

The official launch of the 'Power to Kids: Respecting Sexual Safety Evaluation Report' (undertaken by the University of Melbourne) took place on 8 September, 2020 during National Child Protection Week. The virtual launch was attended by more than 300 people from across the child welfare and out-of-home care sector, demonstrating the interest in the results of this pilot program. The findings of the evaluation showed that the program offers greater protection for young people against harmful sexual behaviour, child sexual abuse and dating violence. The program strengthens the relationships between carers and young people and reduces rates of young people missing from placement. Critically, it increases both young people and carers' knowledge about the issues, and the skills and confidence for carers to have sexual health and safety conversations and, intervene when required.

The Trustees are incredibly proud of the Trusts partnership with MacKillop Family Services, working together in bringing a more hopeful future for vulnerable and disadvantaged children and young people.

Greening Australia

Haining Farm.

The important work at Haining Farm has continued with great success over the past 12 months with the significant planting and revegetation of the site by Greening Australia having been completed. Monitoring has exceeded expectations and results show impressive plant survival and vegetation growth across Haining Farm. The site is achieving a very dense vegetation across the area as required to become a habitat for the Helmeted Honeyeater and Lowland Leadbeater's Possum. The Eucalypt species, the key food species for these faunal emblems are growing very fast. The wetland cells have experienced huge vegetation growth and have given valuable insight into the water requirements of several plant species that are critical for the lowland Leadbeater's Possum habitat.

Greening Australia has obtained funding from Zoos Victoria to conduct research trials on site to further help develop effective revegetation methods to grow key plant species that form critical habitat for the Helmeted Honeyeater and Lowland Leadbeater's Possum. Greening Australia wants to address a gap in the knowledge of competitive interactions in the early life stages of these key species which include *Melaleuca ericifolia*, *Melaleuca squarrosa* and *Leptospermum lanigerum*. This learning will contribute to methods of creating dense habitat for Helmeted Honeyeater and Leadbeaters Possum and further help support habitat recovery.

Control of the site and the ongoing project was returned to Parks Victoria in December 2019 who re-assume the role of custodians of the site an oversight of its operation. The National Parks Act 1975 gives Parks

Victoria the oversight of the management of the Farm and its facilities with a specific edict that the Farm should remain for all Victorians to enjoy.

Parks Victoria will be responsible for the planning and construction of onsite amenities including carparks, toilets and picnic facilities. They have also been busy on a number of practical measures including fire prevention works with two new entrances, new and upgraded trails, water points and multiple culverts. They have also continued to undertake environmental weed control and pest control measures to support the conservation zone development and also conducted wetland cell surveys and monitoring. Clean up works around the farm have also continued with the Ranger for the site organising metal recycling and removing tree risk for future public areas. An information shelter has also been funded by The Department of Environment, Land, Water and Planning which will be installed at the same time as a new temporary carpark.

The education and community engagement program established by Greening Australia continues and will engage the local community and interested schools to ensure the site is accessed to facilitate education opportunities. With restricted access during COVID-19, the core task for Greening Australia has been on the development of a unique Haining Farm ClimateWatch trail with Parks Victoria where specific species can be monitored by citizen scientists. This type of trial was developed by Earthwatch with the Bureau of Meteorology and The University of Melbourne to understand how changes in temperature and rainfall are affecting the seasonal behaviour of Australia's plants and animals.

Depending on the growth rates of plants species on site, the long-term view is to re-introduce these Victorian faunal emblems, the Leadbeaters Possum



ABOVE: Before clean-up next to dairy effluent pits / milking zones



BELOW: After clean-up next to dairy effluent pits / milking zones

and the Helmeted Honeyeater within the next decade. The development of this new habitat at the Farm will continue to be overseen by Parks Victoria with the assistance of Zoos Victoria and Greening Australia.

Aged and Palliative Care

Due to many of the palliative and aged care projects being large scale construction projects they have been undertaken over several years. The Trusts were pleased to fund these projects to not only support these older Australians and their families, but also the local communities in which they exist and, to play a role in developing successful funding partnerships across philanthropy, government, business and local communities.

Frankston Peninsula Carers, Contribution to the construction of Bittern House.

In 2019 the Frankston Peninsula Carers Group undertook a significant construction project to build Bittern House to provide supported accommodation for adults with intellectual disabilities in Bittern, Victoria. Bittern House caters for residents of varying ages and will provide accommodation for residents as they age.

The Frankston Peninsula Carers Committee was established in 2006 by a group of mothers of children with intellectual disabilities. They were concerned about the lack of care options for their adult children as they themselves grow older. Finding long term accommodation for people with intellectual disabilities is a challenge with people accessing public housing and private rental markets which is not always secure or appropriate.

Throughout the project the Committee oversaw fundraising and worked with architects and builders

Bittern Home was opened on 14 February 2020 by the Federal Health Minister and Local Federal Member, Mr Greg Hunt, MP. Photo of ribbon cutting with resident Miranda Cayless and family.



to build a three bedroom house, a staff bedroom and two one bedroom villa units with en-suites, dining and kitchen facilities together with inside and outside living areas. Bittern House provides residents with safe and secure accommodation and aside from the residents, the benefits are also felt by family members who now have peace of mind that their relatives have permanent and secure accommodation with appropriate onsite support.

NDIS figures indicate that there are more than 28,000 people across Australia who require specialist disability accommodation. Bittern House is now the third facility the committee has built with two future sites in the planning stages on the Mornington Peninsula. This is an area of growing need nationally, in particular as residents grow older the Frankston Peninsula Carers have and continue to actively address this need on the Mornington Peninsula in Victoria.

HammondCare

Fit-out of two domestic kitchens for HammondCare Darlinghurst

In 2019 the Trustees approved a request from HammondCare to fit out two kitchens in their purpose built care home in Darlinghurst Sydney. HammondCare Darlinghurst provides permanent accommodation for 42 older people with complex health needs who are experiencing homelessness or at risk of homelessness,

The growth in homelessness is evident amongst older Australians who have very limited options in securing housing let alone long term housing. Elderly people over 65 are becoming the fastest growing demographic with inner Sydney having a very high number of elderly homeless people. Addressing this need HammondCare undertook to build their first care home based on a cottage model. Each floor houses 11 residents with indoor with kitchen, bathrooms and outdoor areas. Residents have access to 24 hour 7 day a week nursing care based on a person-centred care model designed to maximise their independence.

The fit out of two kitchens allowed the Trustees to provide funds for a component within the overall build. The kitchens are open and accessible at all times for residents and are a key meeting space where residents can socialise informally and independently undertake a range of food preparation tasks. The Trustees were pleased to make this contribution to the overall build and support HammondCare in delivering this much needed service to elderly homeless Australians in inner city Sydney.



Darlinghurst resident Clive and his carer Patrick, making use of the new kitchen at HammondCare Darlinghurst.

“The provisioning of these kitchens promotes the key principles of autonomy and independence, with the design empowering residents to maintain their own routine by fostering a homelike environment.”

Peter Armstrong, Head of Homelessness Services, HammondCare.

Arts and Cultural Heritage

An area of focus for the Trusts in the arts and cultural heritage sector is to continue their commitment to making the arts accessible and identifying new and innovative ways to engage with audiences. In the last 12 months this was achieved by the Trusts funding of theatre programs, public programs in Museums and Gallery's and music programs in schools.

In addition to a range of performing arts programs the Trusts have also maintained their commitment to restoring and preserving items of cultural heritage significance.

Art Gallery of South Australia First Fridays Program.

In 2018 the Art Gallery of South Australia (AGSA) was successful in securing funding for their First Fridays program. Held on the first Friday of the month 5pm-9pm, the program provides a unique and immersive way of engaging visitors with AGSA's collection and special exhibitions by offering an eclectic and ever-changing curated program of live music, artist talks, exhibition and performance tours plus art making and workshops. Every second month also includes Educator Connect sessions. The Trusts provided funding for a period of 12 months over which time 12 First Fridays were offered, each with a distinct theme and way of engaging visitors.

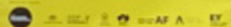
The response to First Fridays was extremely positive, with increased visitation and anecdotal feedback from visitors. While all events recorded over 600 attendees, some attracted over 1300 visitors to AGSA in one evening. AGSA also engaged with over 30 individual artists in delivering the supporting activities which including musicians and film makers.

AGSA

The Studio

Free art
activities for
all
ages

From 29 February

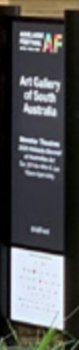


**First Fridays Art/Music/Talks/
Food/Wine/Gallery Store**

Until 9pm
First Friday of Every Month

Presented in partnership with the
Art Gallery of South Australia
and the Department of Education

AGSA



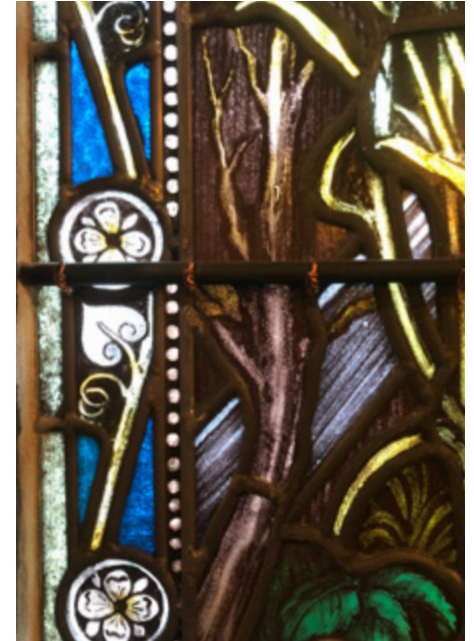
Mission to Seafarers

Restoration and preservation of stained glass windows in the Saint Peter the Mariner Memorial Chapel.

The Mission to Seafarers was established in 1857 and provides practical services and support to seafarers visiting the Port of Melbourne. The building and its collection, located in Flinders Street Docklands, is of national significance. In 2019 the Mission sought funding from the Trusts to restore 18 stained glass windows in the Saint Peter's the Mariner Memorial Chapel. This set of windows was installed between 1917 and 1970 and represent the origins and history of the Mission.

The windows required restoration work which involved the removal, cleaning and repair to the glass and steel frames. Measures were also taken to safeguard the windows from future damage, including the application of lime based mortar to improve the ability of the windows to deal with building movement together with the installation of frames and external grills to protect the glass.

This project has been completed in conjunction with work funded by a State Government Grant to upgrade the Hall and Chapel. It is hoped that this upgrade will enhance the Mission's desirability as an events venue to generate revenue for the Mission. Together, the upgrades and the preservation work will allow the Mission to create and maintain this revenue stream whilst maintaining the integrity of the building and its history.



Restored stained glass windows in the Saint Peter the Mariner Memorial Chapel.

Queensland Music Festival

Cape York Music Choral Program.

In 2019 the Trusts received an application from the Queensland Music Festival to fund choral workshops as part of the Cape York Music Program delivering quality education opportunities to children in remote Queensland.

The Festival's aim is to offer workshops designed to build community pride and social cohesion through music and to preserve and revitalise traditional languages in Cape York.

The Trusts funded three workshop phases with the first taking place as part of the Cape York Music Camp. Indigenous students from primary schools in Aurukun, Coen and Hopevale learnt songs in both their traditional languages and English. Students also learnt how to express their personal stories through music and songwriting workshops. As a highlight, students from Koolkan Aurukun State School together with local elders composed a new school song in Wik Mungkan language which is played regularly at school events.

Queensland Music Festival integrated learnings from these workshops to develop an improved model for delivering music education in Indigenous communities. The key learning from this process has been that Indigenous communities most value educational experiences which increase young people's cultural connection. Community consultation was essential to their program design, as it builds trust, inspires participation and creates a genuine sense of working with rather than doing to which is critical to the program's success.

Queensland Music Festival is continuing their workshop program in remote Queensland and the Trustees are proud to have supported this important work.



Students rehearsing at
Cape York Music Camp

“We are thankful to the John T Reid Charitable Trusts for its faith in the power of music to connect Aboriginal and Torres Strait Islander children to the cultural roots that have sustained their ancestors for countless generations.” **Joel Edmondson, CEO, Queensland Music Festival.**

Community and Social Welfare

Community and social welfare projects continue to form a large part of the Trusts' funding activities with grants provided to organisations tackling alcoholism, gambling and supporting newly arrived migrants amongst many others.

The Trustees also funded projects that centred on new technologies as a mechanism for supporting and driving change to improved health outcomes.

Hello Sunday Morning

Routine Monitoring and Evaluation System project.

In November 2018 the Trustees received an application from Hello Sunday Morning to part-fund the development of a Routine Monitoring and Evaluation System for members of the Daybreak program.

Daybreak is an online program that supports Australians to change their relationship with alcohol. Since 2016, more than 53,000 Australians have accessed the program. Available 24 hours a day, 7 days a week on a smartphone, Daybreak provides members with access to peer-support, behaviour change experiments and qualified health professionals.

With the funding received to develop the Routine Monitoring and Evaluation System, Hello Sunday Morning now has a greater understanding of how Daybreak members progress in the program.

The measures found that there is an immediate reduction in the number of members who have 6 or more drinks multiple times a week, with 76% drinking

at these levels when they start the program, and only 20% doing so after 12-weeks.

An important insight from the data is that at Week 8 there is a slight increase in alcohol consumption, which may indicate this is an important period of the program where members are at greater risk of slipping up. With this knowledge Hello Sunday Morning can now direct resources to adjusting the program to prevent this.

Now that Hello Sunday Morning is able to get real-time insights into Daybreak member behaviours, the program can be refined more effectively and rapidly, as they do not need to rely on external researchers to understand the ups and downs that members experience through more time-intensive, traditional research approaches.

“Understanding how Daybreak members are progressing in real-time, is an important step to help us improve the positive impact Daybreak has on their alcohol consumption and wellbeing.”

James Fowles, Head of Philanthropy.

Key Features

Wherever, Whenever

Urges and anxiety strike any time, any place. Help from Daybreak is as near as your phone.

Effective

Efficacy of Daybreak evaluated by Curtin University's National Drug Research Institute.

Free to Australian residents

Fully subsidised by Australia's Department of Health for residents.

Responsive Community

Give and get support and encouragement from like-minded people facing the same challenges as you.

Private, Anonymous, Secure

No names, secure server, and a fully-moderated community safe-space.



2019 Martu Leadership Program participants with representatives from the Western Australia Police Force at an on country immersion camp.

Kanyirninpa Jukurrpa Martu Leadership Program in Desert Communities.

The Martu Leadership Program was established in 2014 by Kanyirninpa Jukurrpa to equip a generation of Martu people aged 30 to 45 with skills to play an active leadership role in and for their communities.

Until the 1960s, Martu lived a completely traditional desert life in the Western Deserts region of Western Australia. They were among the last Aboriginal people to make contact with the European world and in the short space of two generations have had to adapt from living a traditional way of life to engaging with modern Australia.

The Martu Leadership Program focuses on building confidence and capacity to engage with mainstream society effectively and drive change in areas such as the criminal justice system, economic diversification, government policy, and the destructiveness of alcohol abuse and violence.

In 2019 the Trusts approved a grant to fund the first year of the next five-year stage of the program, focussing on increasing engagement within the remote Martu communities of Jigalong, Punmu, Parngurr and Kunawarritji, as well as delivering the program in Newman. More than 130 participants were involved, each growing in confidence and aspiration, driving successful and effective stakeholder engagement to not only increase their cultural safety and security, but develop new initiatives addressing crime, supporting youth, diversionary programs, improved access to services, and improved wellbeing in remote communities.

The Martu Leadership program engages in ongoing program evaluation which informs the continuous design and delivery of the program in responding to and remaining responsive to the community and the Martu people it serves.

West Welcome Wagon

Provision of salary for Warehouse Manager and warehouse rental for 12 months.

Established in 2013 through community networks West Welcome Wagon provides support to asylum seekers in the western suburbs of Melbourne. They provide a range of essential items including food, clothing, whitegoods, and furniture as well as programs such as English language support for families who have recently arrived from overseas.

West Welcome Wagon sought funding from the Trusts for the rental of a warehouse and a salary for a Warehouse Manager three days a week for 12 months. The provision of a guaranteed location for the warehouse with regular opening hours allows the items collected by volunteers to be stored safely and then co-ordinated and delivered with greater efficiency.

There was also an additional benefit that with regular opening hours and a Warehouse Manager that West Welcome Wagon were able to co-ordinate volunteering opportunities with corporate organisations. West Welcome Wagon have had several volunteer days with businesses including Deloitte, Telstra, Commonwealth Bank, Western Bulldogs, RACV and CSL. Corporate volunteering not only provided the opportunity for staff to become involved and volunteer their time, but further enhances the capacity of West Welcome Wagon to meet the needs of the families they support.



Staff from the Commonwealth Bank of Australia volunteering at the West Welcome Wagon warehouse.

Education and Youth

Funding for education and youth programs throughout 2019 and 2020 assisted young people to access resources and educational opportunities to build their confidence and capacity to engage in school and in the workforce and to ultimately live independent lives.

The Trusts funded a number of projects over the last 12 months including the provision of support to existing programs and new initiatives.



Mission Australia

Funding of six students in the Synergy Auto Repair program.

In 2018, Mission Australia submitted an application to the Trusts to help support six students through their social enterprise Synergy Auto Repairs Program, based in North Melbourne.

Synergy is an innovative program which helps young people involved in motor vehicle offending by building on their interest in cars to develop pathways to sustainable and meaningful employment in a field that matches their interests.

Students gain practical work experience with on the job training at Synergy whilst studying at Kangan TAFE as they work towards a Certificate II qualification. Participants are also supported

with life skills training from the Employment/Training Officer to address barriers to employment, and apprenticeship opportunities are facilitated through a partnership with Suncorp Insurance.

Established in 2014, Synergy has now engaged 105 young people, repaired over 3000 vehicles, with more than 70 percent of participants progressing to complete a work placement or gaining an apprenticeship in the automotive sector within 12 months of the program.

“Synergy is a great example of industry and the not-for-profit sector coming together to find solutions to problems that impact our whole community.”

Minister for Youth Justice Ben Carroll

COOL Australia

Creation of accredited online professional development courses across the school curriculum and the 'At Home Learning' project.

In 2019 the Trusts received an application from COOL Australia to create an on-line accredited professional development course to teach STEM, data literacy and evidence based environmental education. Their goal is to improve access to quality, relevant and engaging scientific curriculum so that students are empowered to respond and become involved with social, economic and environmental issues. They have focussed on targeting three groups of disadvantaged students; Aboriginal and Torres Strait Islander students, students where English is an additional language and students from a low socio-economic background.

This grant is a multi-year grant and in the first 12 months they have worked with key stakeholders to write curriculum aligned lesson plans that provide real world examples and are aligned with the Australian Curriculum and the United Nations Sustainable Development goals. A core focus of these lessons is communicating scientific knowledge. Using cutting-edge scientific research from EarthWatch, COOL Australia have created a range of Bush Blitz lessons, whereby students catalogue and record previously unknown plant and animal species. These lessons have been trialled by leading educational experts who comment, *"they will be invaluable for educators to gain the confidence to teach citizen science in a fun and engaging way. The lessons contain curriculum mapping, factsheets, fun activities, assessment and visual content"*. COOL Australia lessons are free and delivered via their online portal.

COOL Australia have been supporting teachers and parents through the recent COVID-19 related school shutdowns. Their website traffic has increased by 180% and new users have increased by 240%. The Bush Blitz lessons will help teachers who are designing remote learning programs to get students outside connecting with nature and discovering the world around them.



Joost Bakker teaching students about Bees in a BushBlitz lesson.

Environment

The Trusts have continued to fund projects across the breadth of the environmental category including projects from plantings in drought affected areas to documenting historical records and engaging volunteers in caring for the environment.

The Royal Botanic Gardens of Victoria

Funding of salary for specialist Database Officer for the Global Collections Project over three years.

In November 2019 the Trustees approved funding for a Database Officer over three years to work as part of a dedicated team documenting the Global Collection at the Royal Botanical Gardens of Victoria. The Global Collection consists of 400,000 plant specimens gathered since the 1700's, the majority which were acquired by the Gardens first Director, Ferdinand von Mueller. These specimens were collected from around the world and by many well-known botanists and explorers. Examples include a senna pod collected by Dr David Livingstone in Africa in the late nineteenth century, and a banksia collected by Joseph Banks on the expedition to Australia with Captain James Cook in 1770.

These specimens are still in their original nineteenth century books and require substantial conservation work. This involves removing the specimens and placing them on boards (a task undertaken by specialist volunteers) then scanning, interpreting and documenting the specimen both in hard copy and electronically. This work is undertaken adhering to strict conservation measures, and dedicated and specialist database officers ensure the accuracy and continuity of the records. The guarantee of employment over several years supports the viability of the project and ensures that specialist staff are retained.



Specialist volunteer mounting the specimens.



Riversmart

Endangered Ecological Community and plant biodiversity conservation linked to Indigenous medicine and food plants program.

In 2018 the Trustees provided funding to the Macquarie Riversmart program in New South Wales. At their Wetlands Centre and the adjoining Tiger Bay Wetlands Riversmart planted a selection of native species from various endangered ecological communities in the region. At the nearby Beemunnel Reserve Aboriginal Place they have also planted a selection from the endangered Coolibah-Black Box community. Some of these species were used traditionally as food sources by the local Aboriginal people.

While this project was initially impacted by drought conditions, excellent progress has been made and with recent good rainfalls the project is now moving strongly toward an excellent outcome.



Stock proof fencing around the extension of the Tiger Bay wetland walking trail has shown immediate results with the return of water with native grasses, reeds, shrubs and salt bushes emerging.

Health Support

In the last financial year the Trusts considered enquiries for projects related to mental and physical health, programs supporting community education initiatives and, medical research. Funding was approved for a range of projects including those with a preventative focus.

ANZGOG

Supporting the establishment of translation research initiative, TR-ANZGOG.

In 2018 ANZGOG sought funding to establish translational ANZGOG (TR-ANZGOG), an innovative and world class translational research initiative.

Gynaecological cancers are the fourth most common cancers among women and include seven different cancers. While survival rates across all cancers have improved by 19% over the last 25 years, the survival rate for all gynaecological cancers has only improved by 7%.

Associated with clinical trials there is an increasing need to collect biospecimens such as tissues and blood samples. These may be used to screen patients to take part in clinical trials and assist to identify cancer subtypes and genetic markers. The specimens are critical for assessing relevant biomarkers such as:

- Development and validation of prognostic and predictive markers;
- Molecular signatures;
- Identification of therapeutic targets; and
- Other translational research studies.

The project, TR-ANZGOG, will provide support for researchers through the collection and processing of biospecimens and will enable greater collaboration in Australia and internationally by making these biospecimens available for future translational research beyond the trial. This will enable researchers to work toward better health outcomes for patients affected by gynaecological cancers.



Cystic Fibrosis Community Care

Support of the 'Connecting Up' project.

In 2018 the Trustees approved a funding submission from the Cystic Fibrosis Community Care for their 'Connecting Up' Program.

Due to the nature of the condition and decreased immunity, people living with cystic fibrosis are advised not to socialise with one another for risk of cross infection. Cystic Fibrosis Community Care sought funding to develop additional support services for people living with cystic fibrosis and their families building upon their existing support networks and information services. These include:

- Development of material for promotion of 'Connecting Up' program;
- Developing new information pages on their website;
- Running 60 one-on-one support sessions with a support worker and clients; and
- Running 'Caring for the Carers' workshops in metropolitan and regional locations.

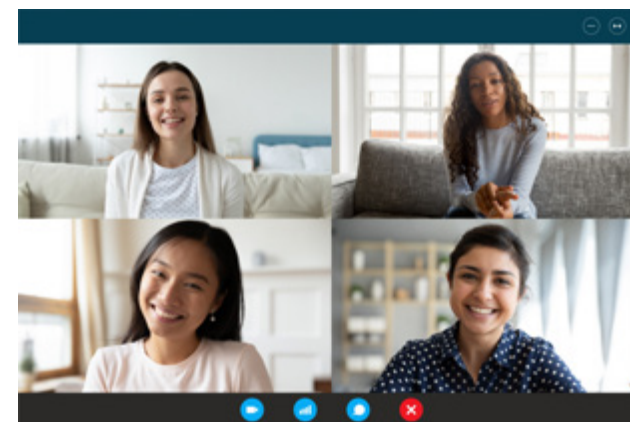
The 'Connecting Up' program devised strategies aimed at addressing the concerns of teenagers, young adults and their carers. Support for children and their families through this critical period of adolescence and early adulthood offers the potential for improved long term health outcome. These strategies were informed by research and spanned mental health issues, work

and study options, medications and treatments. The objective of the project was to assist members of the community feel better connected and mentally more equipped for life challenges by providing information, tailored support from a support worker and also support for caregivers. Research shows that people living with cystic fibrosis are extremely isolated and have a higher risk of developing depression and anxiety.

It is hoped that these early intervention strategies will set a foundation for individuals to have the best opportunity to reach their physical, social and emotional potential.

"The John T Reid Charitable Trusts grant helped fund a Social/Health Worker who has dramatically increased our capacity to provide more one-on-one tailored support to young people who have cystic fibrosis and their families in Victoria. At this stage we have provided social work support to more than 60 people living with cystic fibrosis and their families. The key issues supported to date relate to financial stress, mental health, medical, education and employment, health and lifestyle, and specialist support services."

Katherine Pengilly, Head of Marketing and Fundraising, Cystic Fibrosis Community Care



Hummingbird House

Family Engagement project.

In 2019 the Trustees approved a grant to the Hummingbird House Family Engagement project. Established in 2011, and operational since 2016, Hummingbird House is Queensland's only children's hospice. Located in Chermside, Hummingbird House provides short break stays, family support services, creative and physical therapies, and care at the end of life, and for children with life-limiting conditions.

Hummingbird House sought funding to appoint a Leisure and Lifestyle Co-ordinator, otherwise referred to as their "Chief Officer of Fun". The Chief Officer of Fun coordinates meaningful events and activities within the House which provide guests, siblings and families with opportunities for socialisation tailored to their ability. Working alongside the clinical team to provide best practice palliative care, the role of the Chief Officer of Fun is to address the families range of psychological, social, emotional and physical needs, whilst also having fun. Testimonials from families who have stayed at Hummingbird House highlight their ability to relax and spend time together focussing on creating memories and having fun in a setting away from sterile hospitals.

The Trustees are pleased to have been able to provide this funding and to continue their relationship with Hummingbird House.



"When we first heard about Hummingbird House, we were blessed to be able to take Archie there for his end of life care. To be able to leave the hospital, outside of the clinical walls and beeping monitors, we could be a family. We spent all of our time outside under the trees, sunshine and stars and it was perfect."

The du Preeze family

Acknowledgements

Thank you to the organisations who provided images for the projects featured in the Annual Review.

Thank you to Andrew Rice from Greening Australia who prepared the article about Haining Farm and the project being undertaken there by Greening Australia, Zoos Victoria and Parks Victoria.

Printed on 100% recycled paper.

A web version is available at www.johntreidtrusts.com.au

Thank you to Monique Satchell for supplying this image, as well as images for the cover and in the Response to the 2019/20 Bushfires article on page 8.

Prepared by Amanda Henshaw.



*Thank you to the organisations across
the country who support their
communities each and every day
and, in times of crisis.*



Contact us

PO Box 438, CANTERBURY VIC 3126

Phone: 03 9830 4155

Email: office@johntreidtrusts.com.au

Web: www.johntreidtrusts.com.au

ABN's: 51 836 782 003 AUSTRALIAN TRUST
94 715 755 241 VICTORIAN TRUST

We acknowledge the Wurundjeri people, the indigenous custodians upon whose lands the Trusts office are located and we pay our respects to Elders, past, present and emerging.